



# AD ASTRA

122' 9" (37.39M) | MOONEN | 2025

# AD ASTRA

---

## BASIC SPECIFICATIONS

<b>BUILDER</b>	<b>FUEL TYPE</b>	<b>GROSS TONNAGE</b>	<b>CRUISING/MAX SPEED</b>	<b>ACCOMMODATION</b>
Moonen	Diesel	345 GT	14.5 knots / 17 knots	10 guests in 5 cabins
<b>INTERIOR DESIGN</b>	<b>EXTERIOR DESIGN</b>	<b>LENGTH</b>	<b>BEAM</b>	<b>HULL MATERIAL</b>
Hollander Yacht Design	René van der Velden Yacht Design	122' 9" (37.39m)	26' 3" (8m)	Steel
<b>CREW</b>	<b>FLAG</b>	<b>BUILT/REFIT</b>	<b>DRAFT (F/M)</b>	<b>ENGINES</b>
8	Antigua & Barbuda	2025 / 0	7' 4" (2.21m)	2 x Caterpillar C32 ACERT

## KEY FEATURES

- › **WAKE UP IN LUXURY – FULL-BEAM MASTER SUITE ON THE MAIN DECK, WITH FOUR ADDITIONAL GUEST STATEROOMS FOR FRIENDS & FAMILY**
- › **BEACH CLUB VIBES – HYDRAULIC SWIM PLATFORM, SUNDECK JACUZZI, AND SPACIOUS OPEN-AIR LOUNGES CREATE THE ULTIMATE CHARTER LIFESTYLE**
- › **MOONEN PEACE OF MIND – QUIET, STABLE, AND BUILT TO LAST, A YACHT DESIGNED FOR MEMORABLE CHARTER EXPERIENCES**
- › **DEDICATED PROFESSIONAL CREW – A HAND-PICKED TEAM OF 7 LED BY AN EXPERIENCED CAPTAIN, TRAINED TO DELIVER BESPOKE ITINERARIES, FIVE-STAR SERVICE, AND UNFORGETTABLE CHARTER EXPERIENCES**
- › **PLAY ALL DAY – JET AROUND ON SEADOOS, DIVE WITH SEABOBS, RIDE THE WAVES ON E-FOILS, OR TOW THE KIDS BEHIND THE WILLIAMS DIESELJET**
- › **SEAMLESS CONNECTION – WI-FI AND STARLINK KEEP YOU CONNECTED WHILE YOU’RE OFF THE BEATEN PATH**
- › **SHALLOW-DRAFT EXPLORER – AT JUST 2.2 M (7’3”), SHE CAN ACCESS SECLUDED ANCHORAGES IN THE BAHAMAS, EXUMAS, OR CARIBBEAN HARBORS WHERE LARGER YACHTS CANNOT GO**
- › **STEP ABOARD A BRAND NEW 2025 MOONEN – A PERFECT BLEND OF DUTCH CRAFTSMANSHIP AND MODERN DESIGN**

## WATER TOYS

- › 2025 AXOPAR 37' XC CROSS CABIN, HIGH-PERFORMANCE ADVENTURE TENDER WITH TWIN 300HP MERCURY ENGINES, CLIMATE-CONTROLLED CABIN, AND PREMIUM JL AUDIO SOUND SYSTEM FOR STYLISH ISLAND-HOPPING AND COASTAL EXPLORATION.
- › 2× SEADOO SPARK TRIXX
- › FLITEBOARD & FLITESCOOTER
- › INFLATABLE KAYAK
- › TOWABLES (HOTSEAT, SCOUT, BINAR)
- › 4× PURE FLEX SCOOTERS (SHORE MOBILITY)
- › GOLF SET UP
- › WILLIAMS 565 DIESELJET
- › 2× SEABOB F9 (NAVAL ORANGE)
- › 2× PADDLEBOARDS
- › WAKEBOARDS & WATERSKIS
- › FULL SNORKEL & DIVE KITS
- › SLIDE
- › FUN AIR SEAPOOL

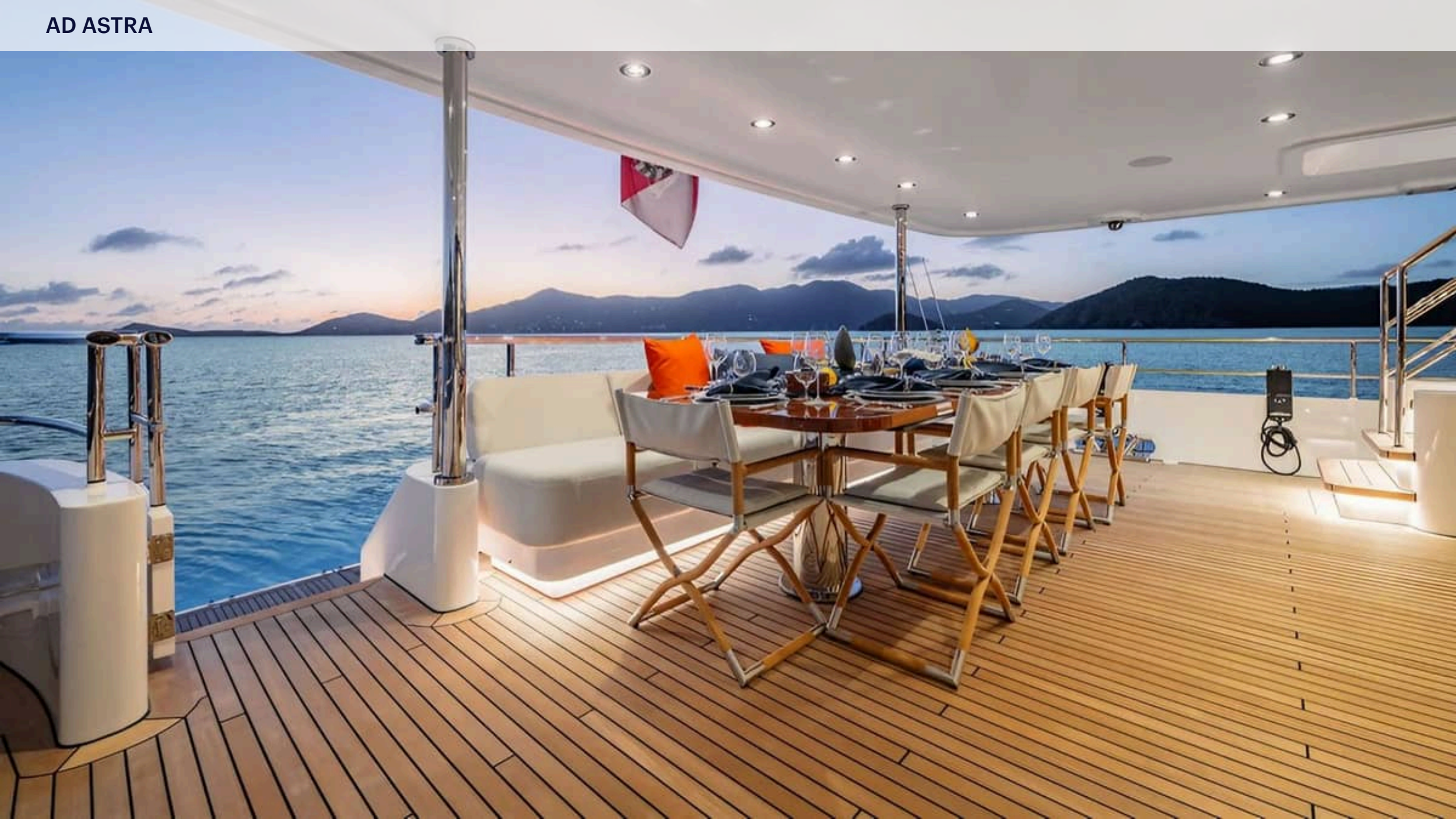
AD ASTRA



AD ASTRA



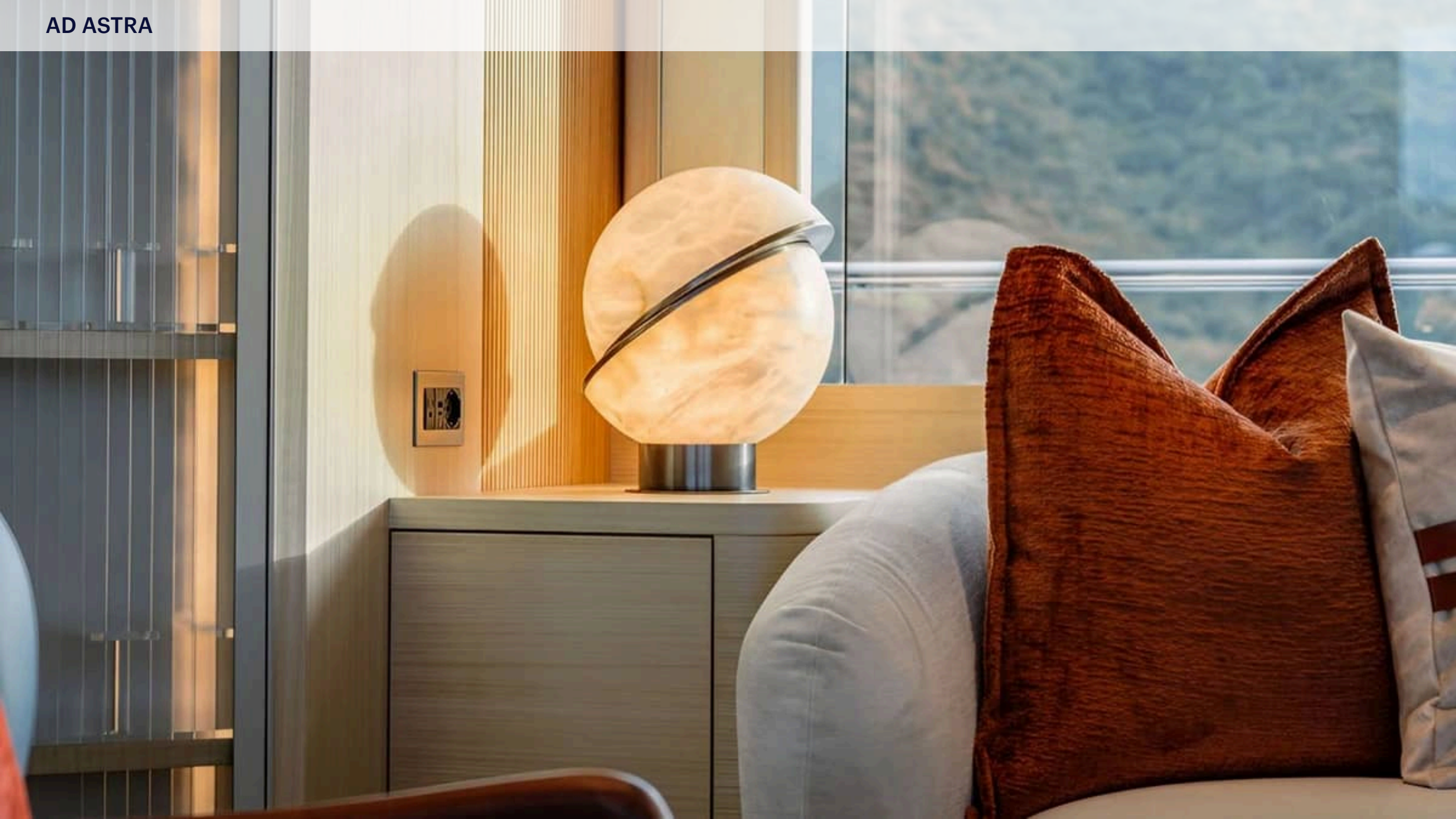
AD ASTRA

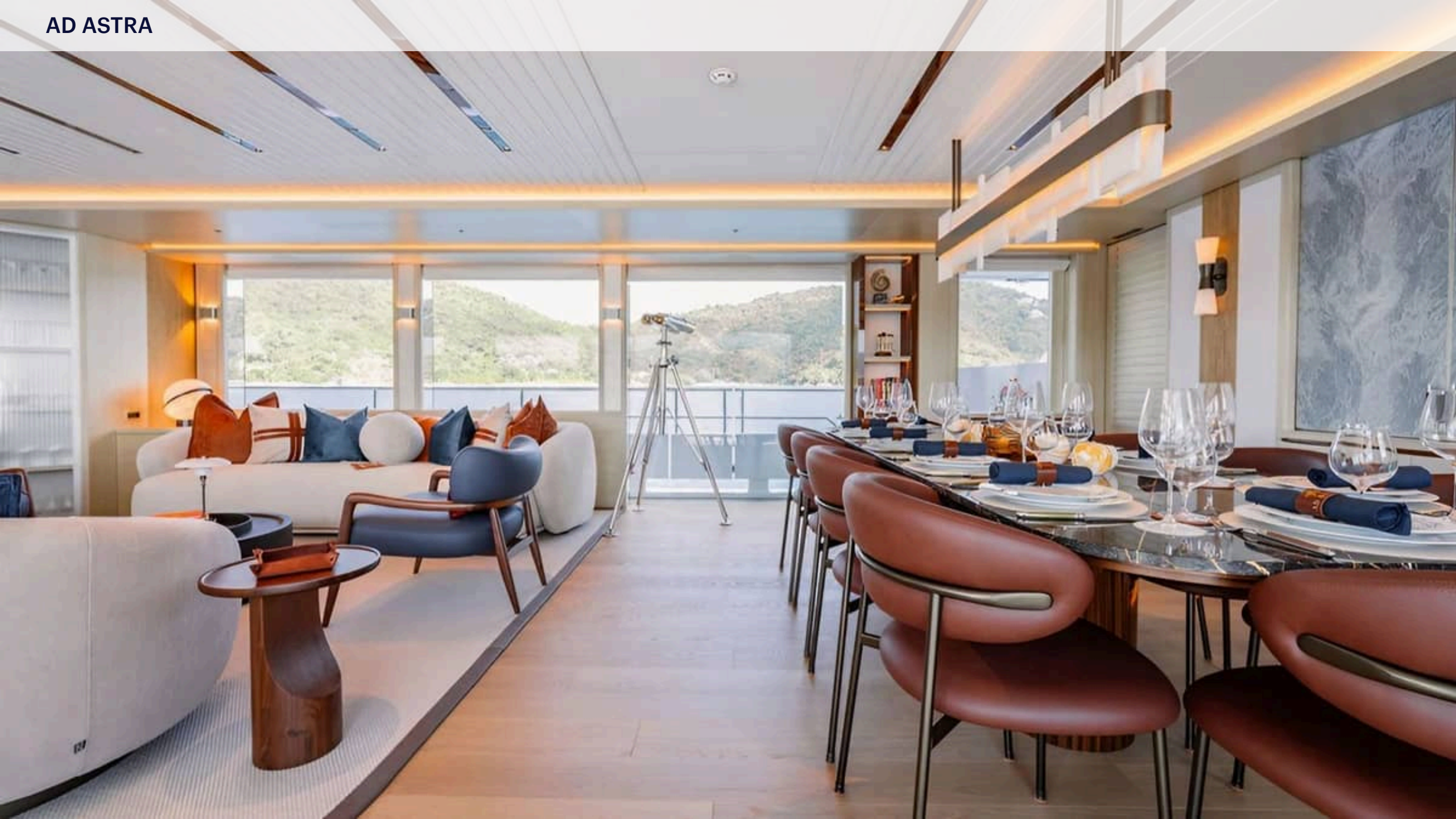






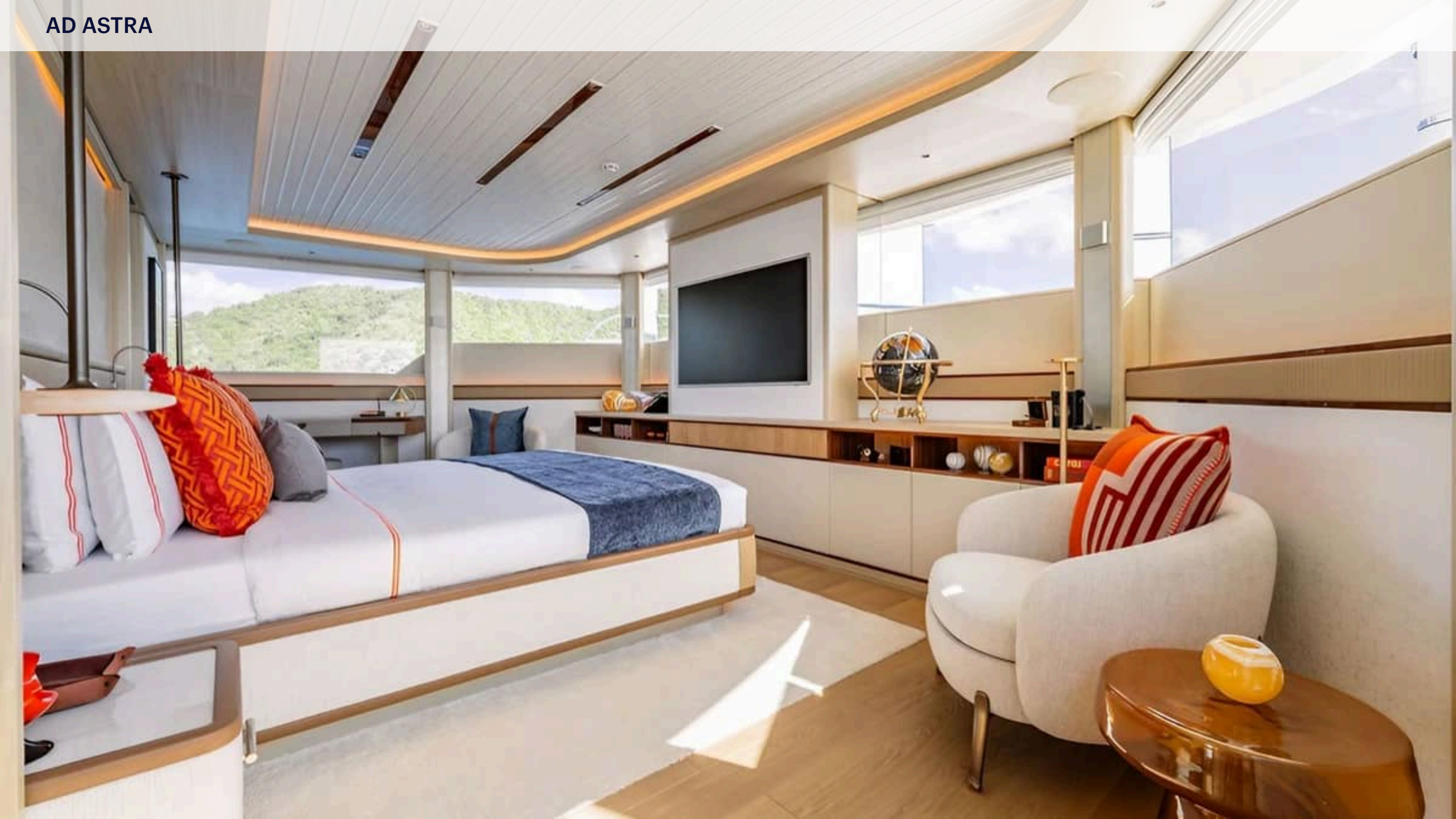












AD ASTRA





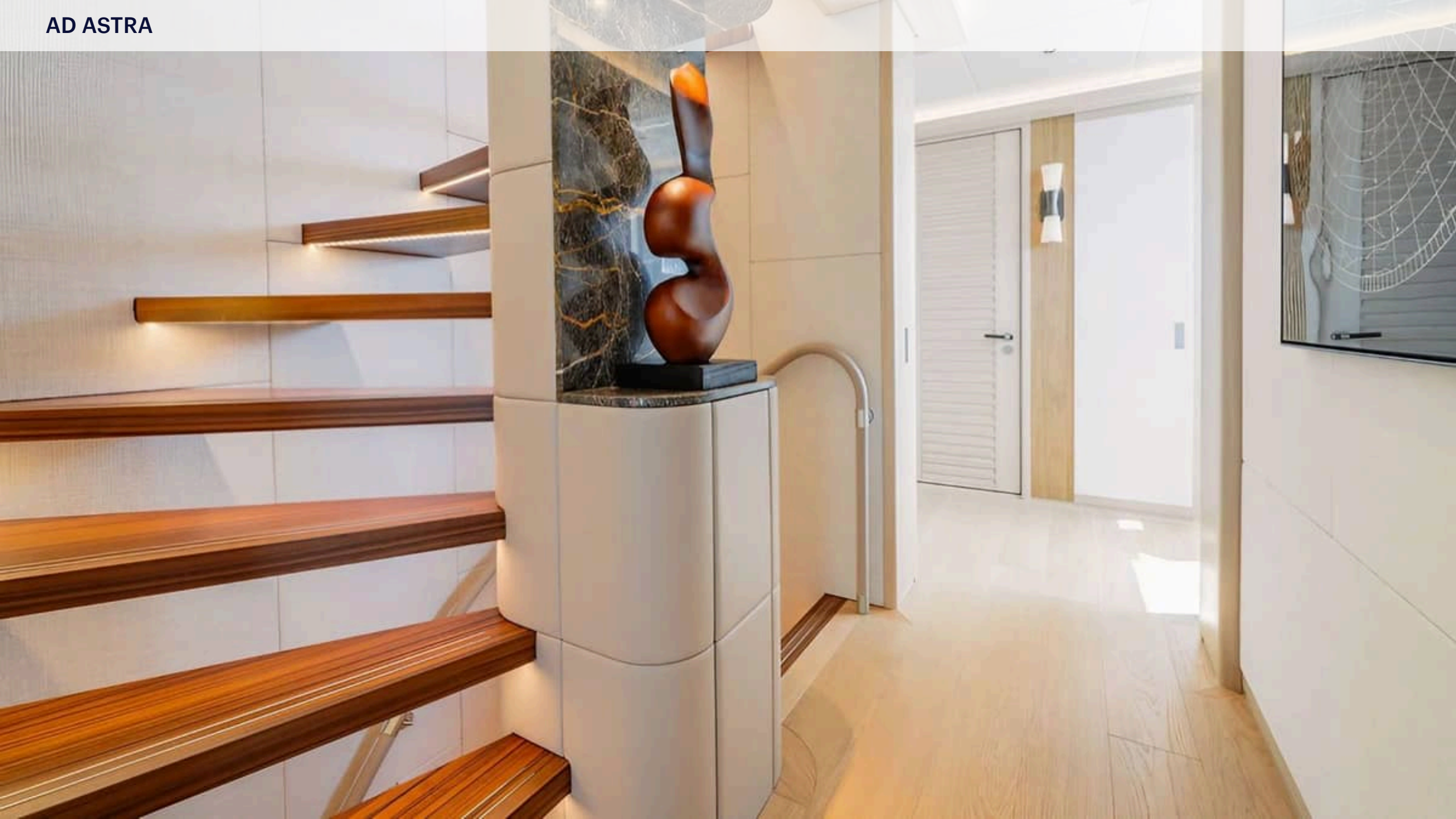
AD ASTRA









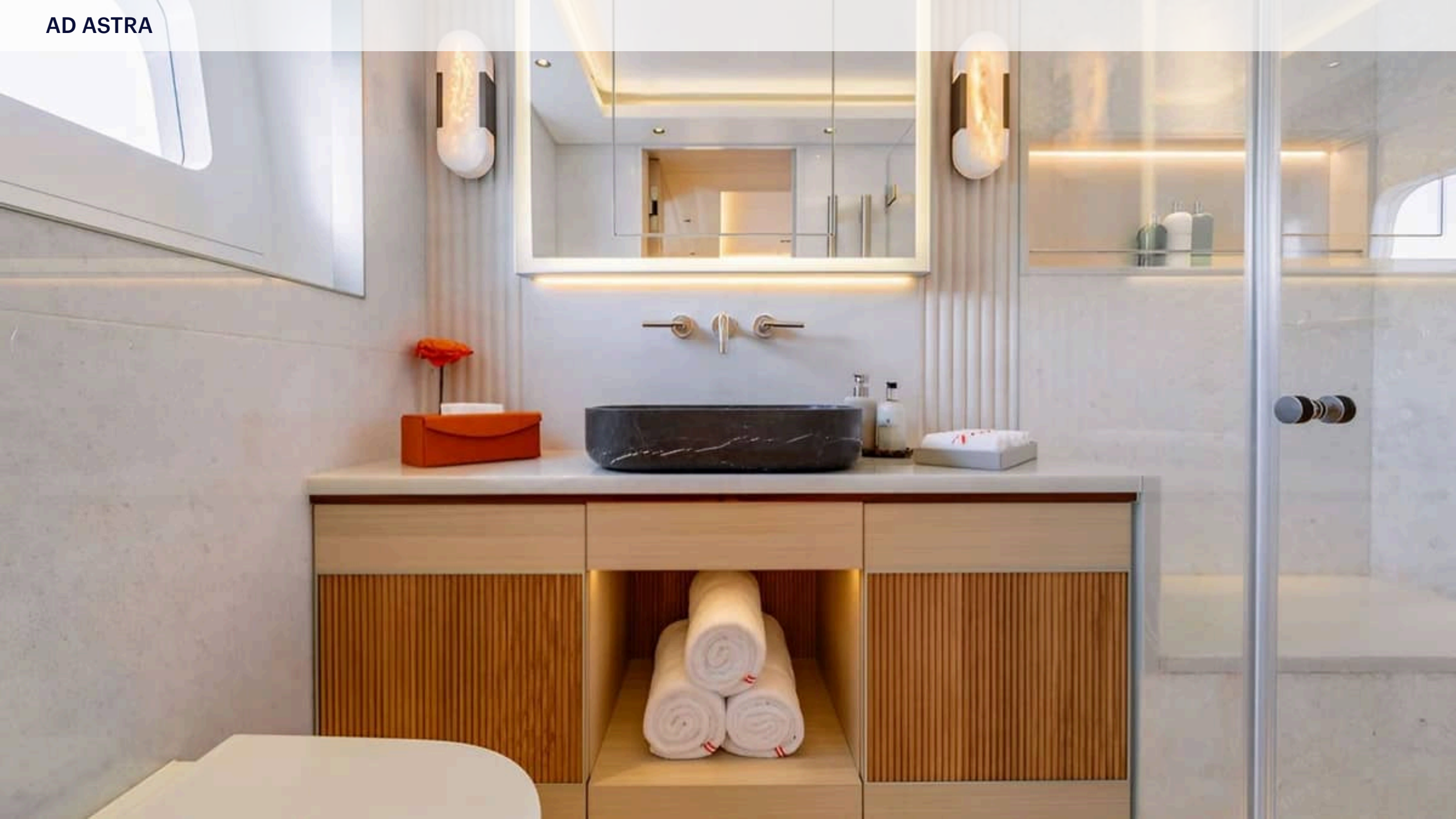




AD ASTRA

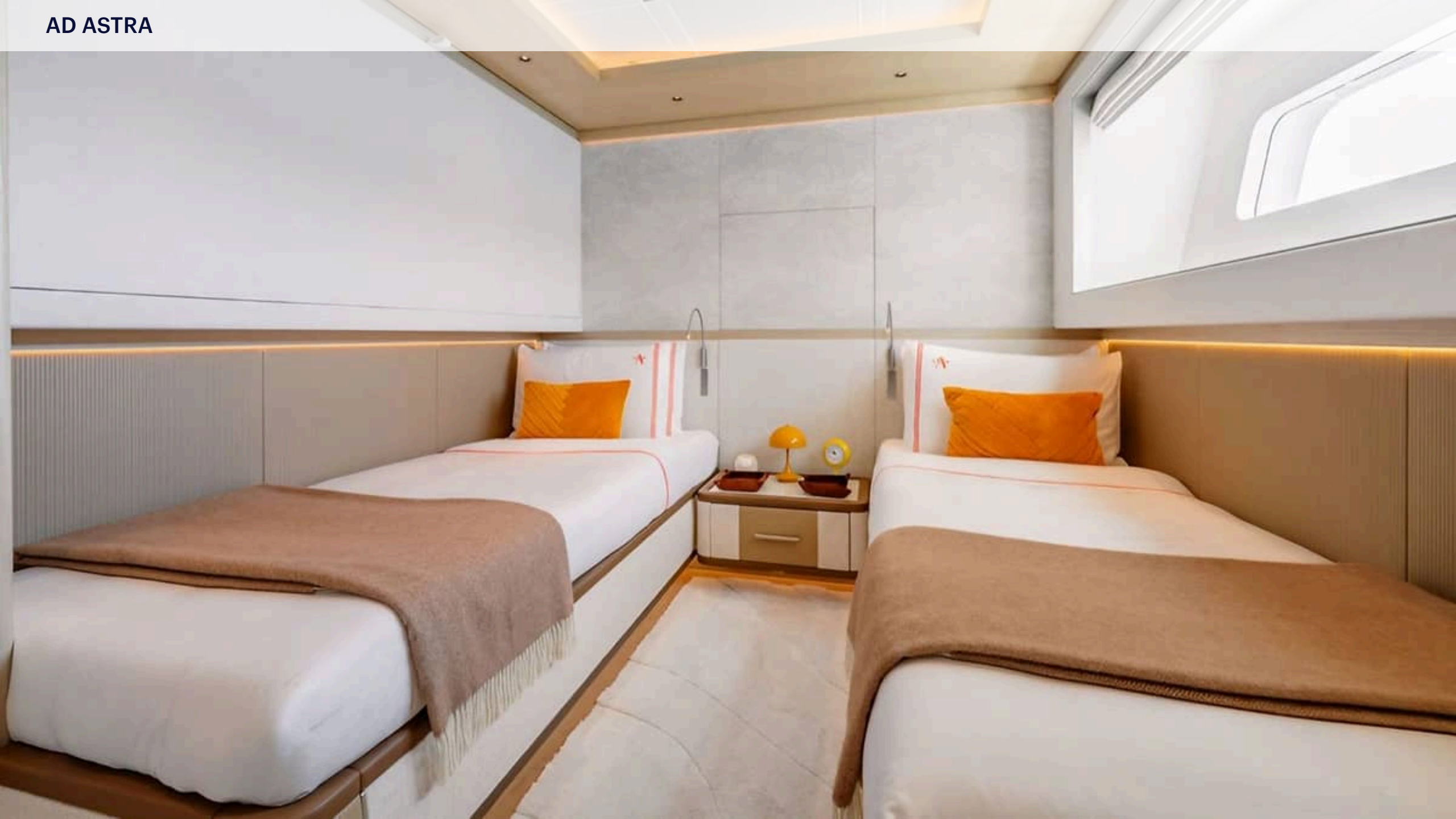






AD ASTRA





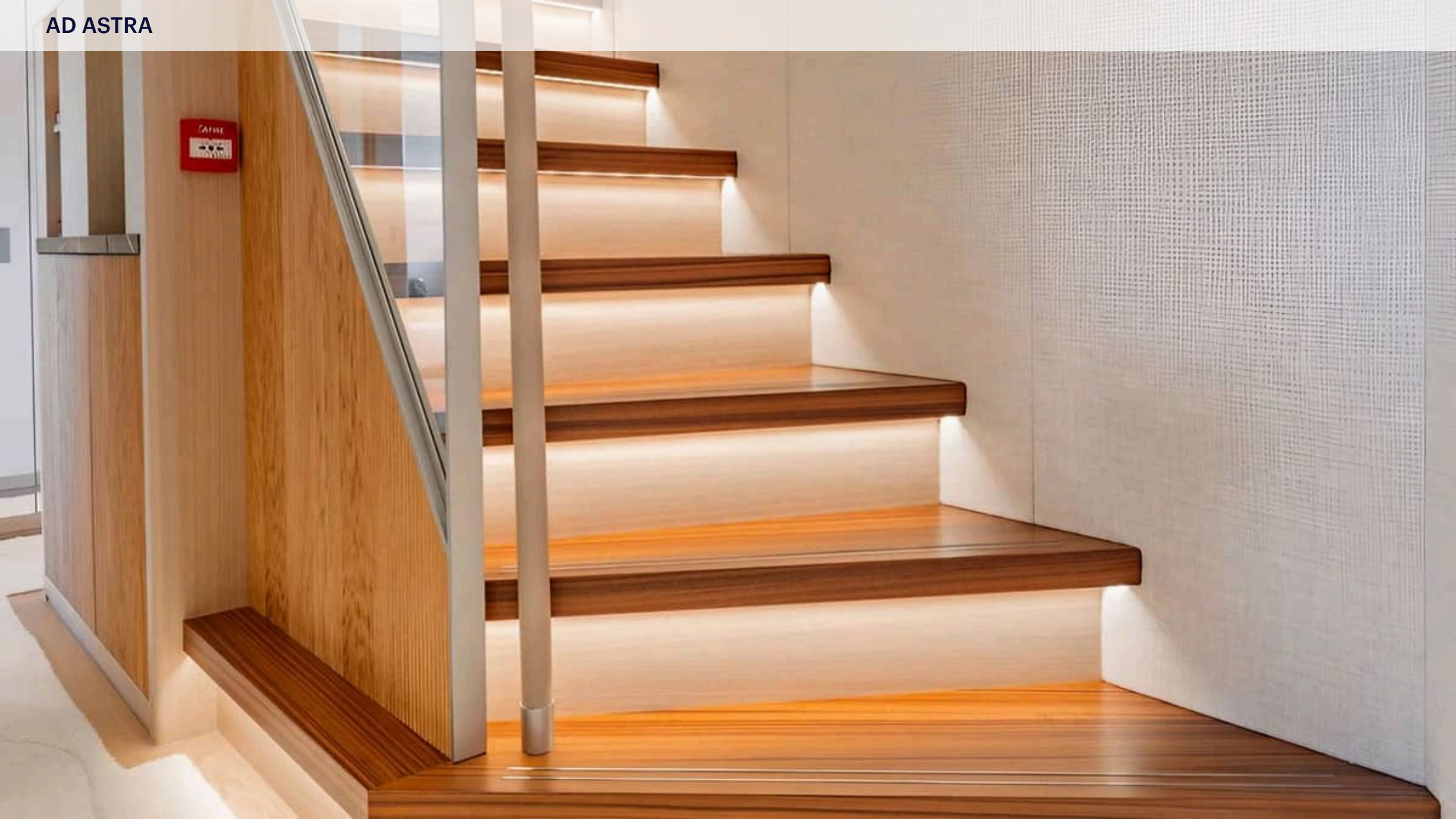




AD ASTRA



AD ASTRA











AD ASTRA













AD ASTRA



AD ASTRA



AD ASTRA







AD ASTRA



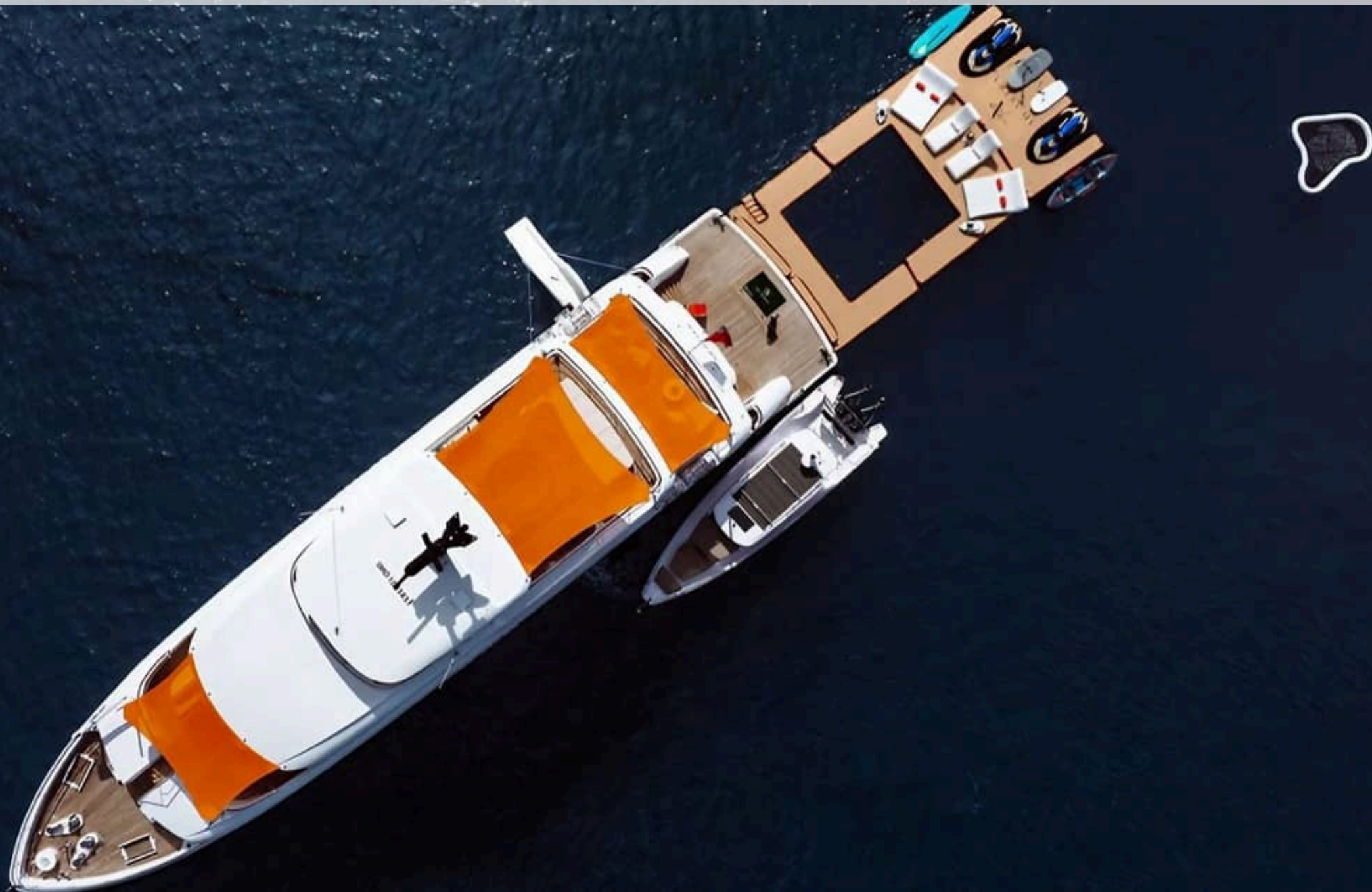


AD ASTRA



AD ASTRA







AD ASTRA



AD ASTRA



AD ASTRA



AD ASTRA



AD ASTRA



AD ASTRA



AD ASTRA



AD ASTRA



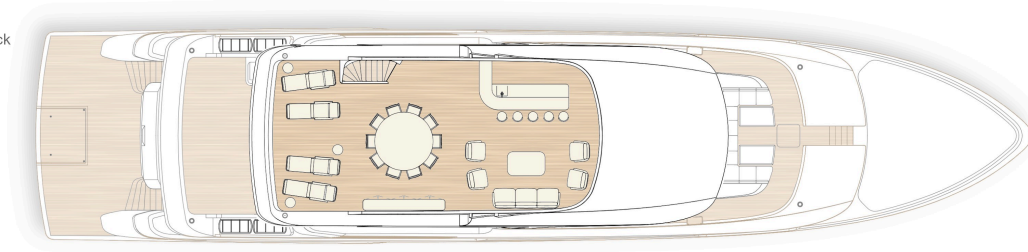
AD ASTRA



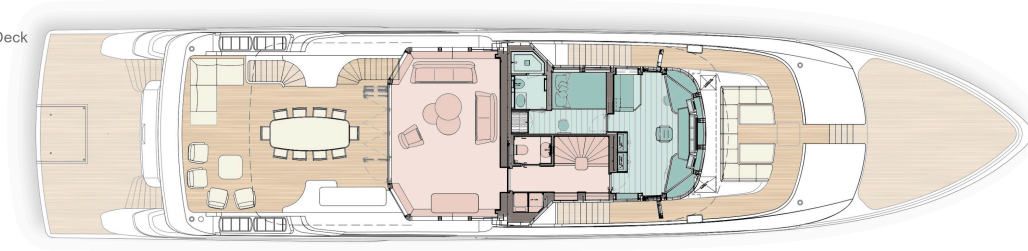
Profile



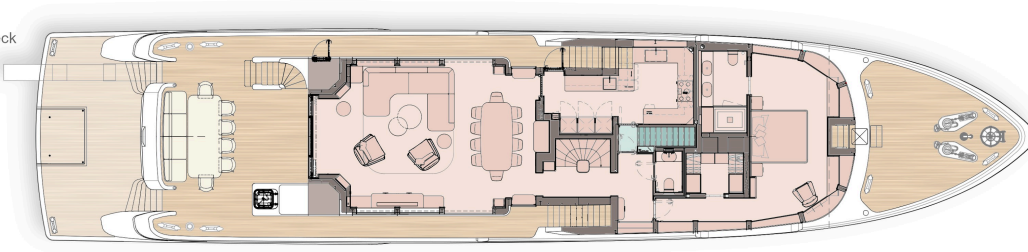
Sun Deck



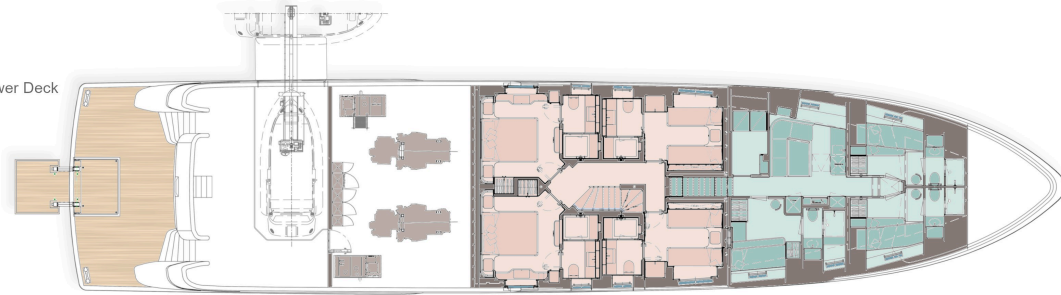
Bridge Deck

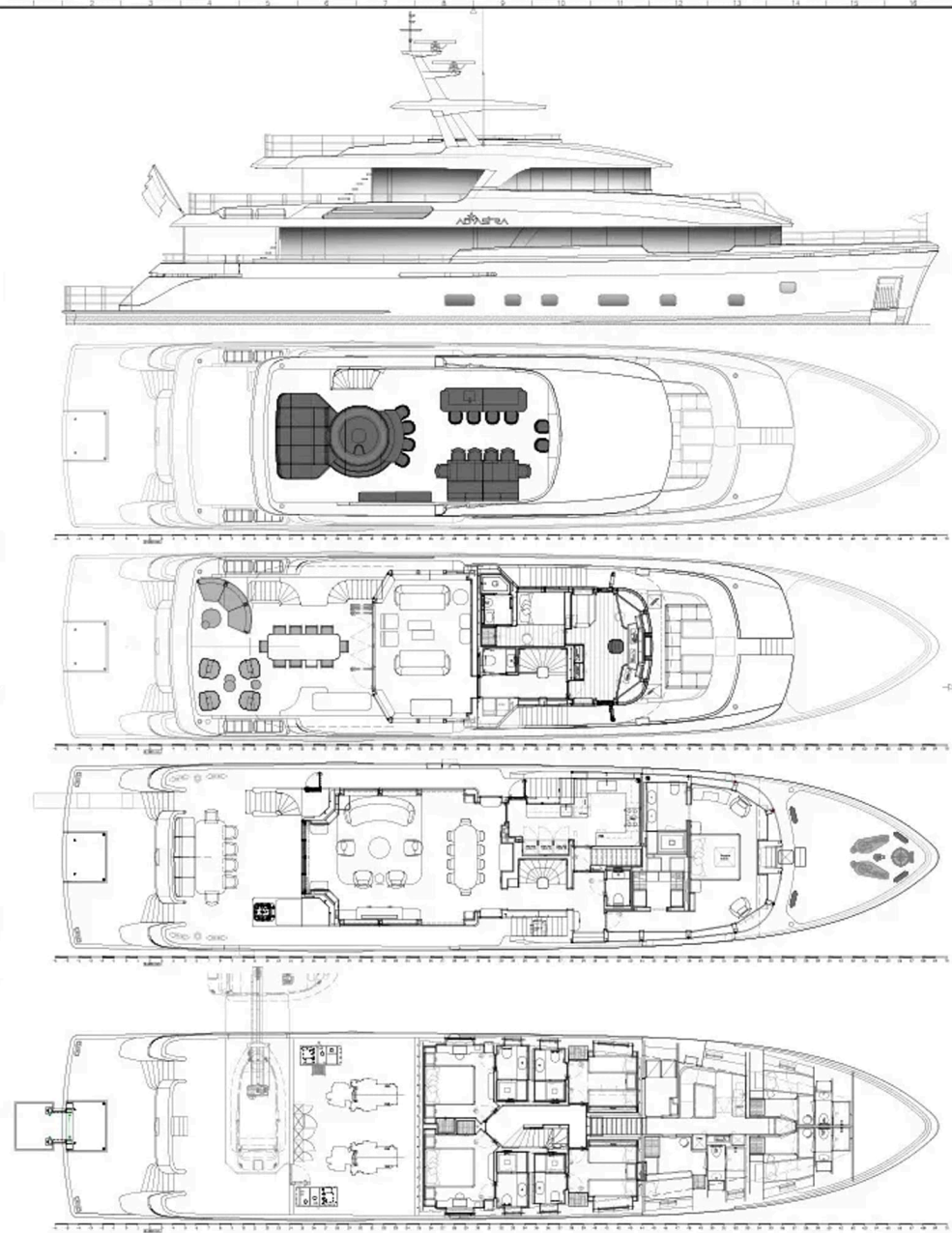


Main Deck



Lower Deck





Exterior design:  
*Steph van der Schueren*  
 Naval Architect & construction:  
**MOONEN YACHT DESIGN BV**  
 Hoogvlietdijk 24-C, 187 24, Alkmaar

**YN 205**

P13	Decking Plan Room: Upper Deck	1/4"
P12	Decking Plan Room: Lower Deck	1/8"
P11	Decking Plan Room: Upper WHC/Steer/Inboard Engine	1/8"
Model	Plan Name: Decking	1/8" Plot

Project	
<b>MOONEN</b>	<b>General Arrangement</b>
<b>YACHTS</b>	<b>'Martiniq' VII</b>
July 15, 2014	Rev: 001
1000000000	Rev. No: 1000000000
Scale: 1:100	General Arrangement: Page: 44/200
Client: Moonen	Page: 2/2
© Copyright by Moonen Yachts b.v.	Sheet: 01